



PCM
£1,800 PCM
Barrowfield Lane
Kenilworth, CV8 1EP

PROPERTY SUMMARY

****360 Virtual Tour on this STUDENT PROPERTY**** Three bedroom property finished to a great standard close to the centre of Kenilworth and just minutes walk from the university bus routes. Comprises three double bedrooms, two bathrooms modern kitchen lounge and separate laundry area. Furnished and Available 1st September.

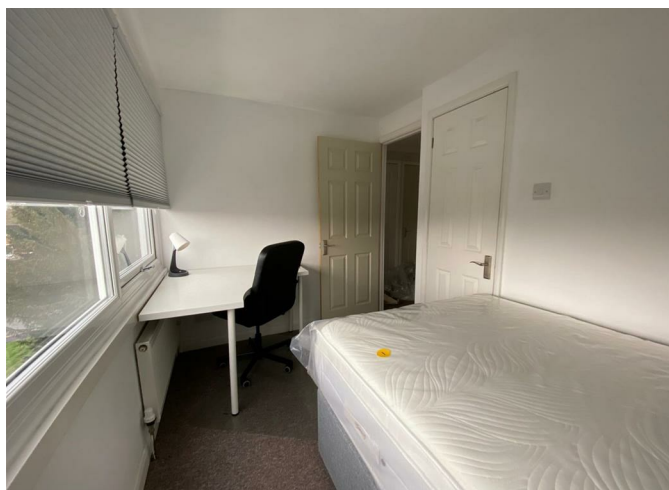
3



2



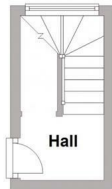
0



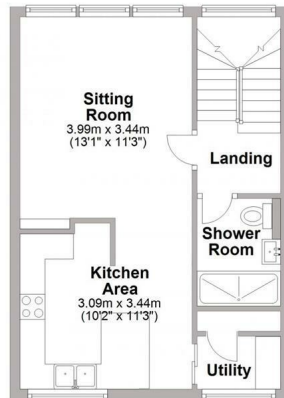




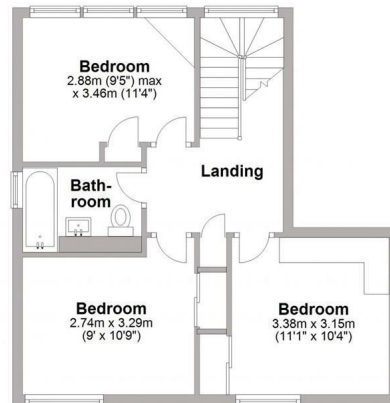
Ground Floor
Approx. 5.5 sq. metres (59.0 sq. feet)



First Floor
Approx. 38.2 sq. metres (411.5 sq. feet)



Second Floor
Approx. 45.5 sq. metres (490.3 sq. feet)



Total area: approx. 89.3 sq. metres (960.7 sq. feet)



Energy Efficiency Rating		
	Current	Potential
Very energy efficient - lower running costs		
(92 plus) A		
(81-91) B		
(69-80) C	73	73
(55-68) D		
(39-54) E		
(21-38) F		
(1-20) G		
Not energy efficient - higher running costs		
England & Wales		EU Directive 2002/91/EC

Agents Note: Whilst every care has been taken to prepare these particulars, they are for guidance purposes only. All measurements are approximate and are for general guidance purposes only and whilst every care has been taken to ensure their accuracy, they should not be relied upon and potential buyers/tenants are advised to recheck the measurements



OFFICE ADDRESS
8a Regent Street
Leamington Spa
Warwickshire
CV32 5HO

OFFICE DETAILS